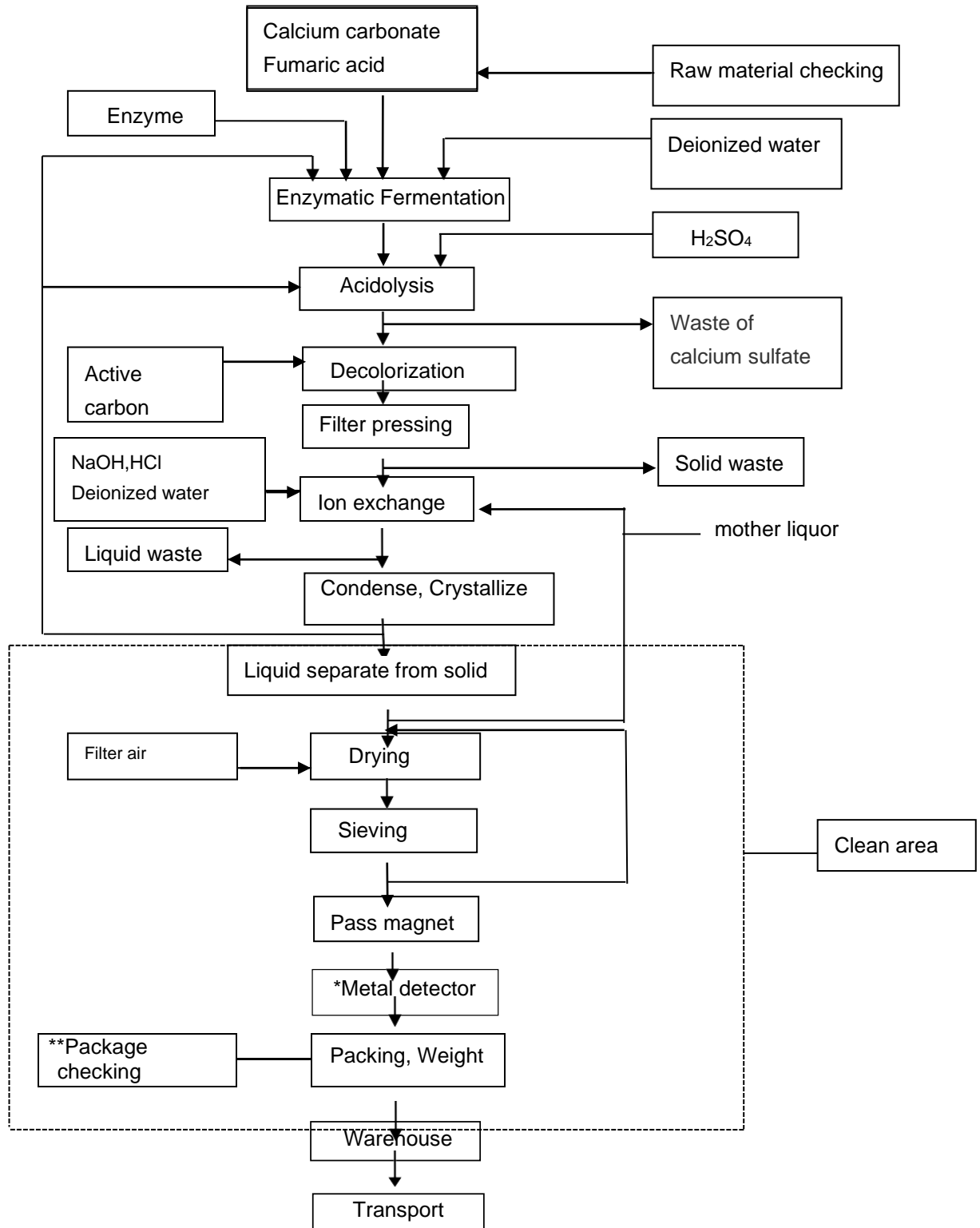


MANUFACTURING PROCESS FLOW CHART



(L-Malic Acid, Organic Compliant & NGPV)



Marking: * CCP

** OPRP (Operational Prerequisite Program)

Reviewed January 2023

***CCP: Metal detector**

Biology hazard: none

Chemical hazard: none

Physical hazard: Yes, if metal detector is not properly calibrated, foreign matter may not be fully removed. Standard Operating Procedures are in place to validate the efficiency of metal detection before and after testing and during the production process.

Detection levels (stainless steel: ≤ 1.5 mm, ferrous: ≤ 1 mm & non-ferrous: ≤ 1.2 mm)

****OPRP: Packing &Weight**

This process is employed mainly to prevent physical hazards such as adulteration with filth, insect infestation, or other visually evident extraneous materials.

Product is stored in properly labeled packaging, accordingly to batch number, in a designated area of the warehouse to avoid product and batch mix-ups.

Product should not be stored near hazardous, toxic or perishable goods. Product should be stored with proper distance between the walls and floors to ensure ventilation and temperature and humidity should be checked regularly to ensure proper environmental storage conditions.

Reviewed January 2023